

St James Episcopal Church and Hall – information



St James' Church



St James' Community Hall

Capacity

Hall: Theatre style = 60 people
Café style (long or square tables available) = approx. 50 people
Church: 260 people

Dimensions

Hall: 11m x 8m = 88m² Ceiling height 2.8m
Church: 22m x 14.5m = 312m²
Pews are not fixed to the floor so can be moved by hirers. This would require adequate manpower (three people per pew) and supervision by committee members. Wooden floor with carpet in aisles.

Equipment available

Hall:

- Tables
- Chairs
- Baby chairs
- Toddlers' toys
- Overhead projection possible using plain wall
- Fully fitted kitchen (with crockery and cutlery, oven, fridge)
- Disabled access
- Fire alarm
- Wifi (coming soon)

Heating

Hall: Gas central heating on automatic timer/thermostat
Church: Electric heating. Due for replacement soon

Access

- Some parking in churchyard and ample free on-street parking or in Market Square (150 yards away – charges apply during the day)
- Vehicles can pull up directly to narthex (porch doors) to offload through double swing doors.
- Large bus parking possible nearby across the river
- Bus station 100 yards away
- Railway station – 10 minutes' walk

Audio

Hall: None supplied
Church: Radio mike and microphones to use with PA system. Excellent acoustics. Pipe organ (Wadsworth 1877). Bluthner concert grand piano.

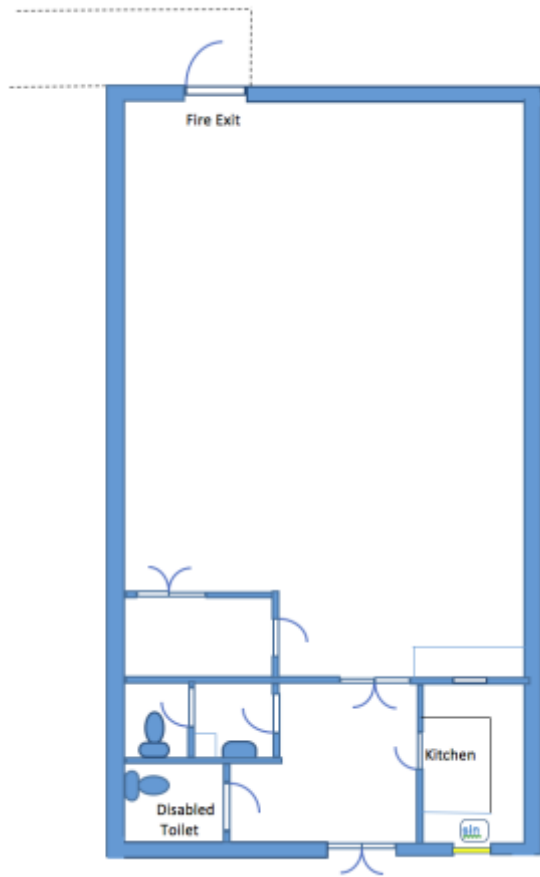
Facilities

Hall: Two single toilets, both unisex, one disabled
Church: Hall facilities can be used

ENQUIRIES

Please call 01569 764473 (answering service) or [click here](#) to send an email.

St James Episcopal Church Hall



St James Episcopal Church

